



Noise Monitoring Result

Day Time (0700 - 1900hrs on normal weekdays)

Location: M1a - Footbridge at EX-Wanchai Harbour Road Sports Centre

Date	Time	Weather	Measurement Noise Level			Baseline Level	Construction Noise Level	Limit Level
			Leq	L10	L90	Leq	Leq	Leq
Unit: dB(A), (30-min)								
2/12/2019	10:22	Fine	71.6	74.5	67.5	72	72	75
9/12/2019	11:11	Fine	70.5	74.2	65.1	72	71	75
16/12/2019	13:52	Cloudy	74.1	77.6	67.8	72	70	75
23/12/2019	14:42	Cloudy	70.2	73.1	68.7	72	70	75



Noise Monitoring Result

Day Time (0700 - 1900hrs on normal weekdays)

Location: M2b - Noon-day gun area

Date	Time	Weather	Measurement Noise Level			Baseline Level	Construction Noise Level	Limit Level
			Leq	L10	L90	Leq	Leq	Leq
Unit: dB(A), (30-min)								
2/12/2019	15:55	Fine	67.9	71.4	61.0	68	56	75
9/12/2019	16:24	Fine	66.9	71.6	62.8	68	67	75
16/12/2019	9:45	Cloudy	67.1	68.5	65.0	68	67	75
23/12/2019	15:28	Cloudy	65.2	66.7	63.0	68	65	75

Location: M3a - Tung Lo Wan Fire Station

Date	Time	Weather	Measurement Noise Level			Baseline Level	Construction Noise Level	Limit Level
			Leq	L10	L90	Leq	Leq	Leq
Unit: dB(A), (30-min)								
2/12/2019	15:11	Fine	67.0	71.1	62.6	69	67	75
9/12/2019	10:28	Fine	67.0	70.5	62.9	69	67	75
16/12/2019	10:30	Cloudy	65.2	66.7	63.2	69	65	75
27/12/2019	13:20	Fine	65.5	67.0	62.0	69	66	75



Noise Monitoring Result

Day Time (0700 - 1900hrs on normal weekdays)

Location: M4b - Victoria Centre

Date	Time	Weather	Measurement Noise Level			Baseline Noise Level	Construction Noise Level	Limit Level
			Leq	L10	L90	Leq	Leq	Leq
Unit: dB(A), (30min)								
2/12/2019	11:03	Fine	66.3	71.2	62.0	67	66	75
9/12/2019	09:43	Fine	67.7	71.4	62.6	67	57	75
16/12/2019	11:15	Cloudy	64.5	66.2	62.5	67	65	75
27/12/2019	13:57	Fine	67.4	69.0	64.5	67	51	75

Location: M5b - City Garden

Date	Time	Weather	Measurement Noise Level			Baseline Level	Construction Noise Level	Limit Level
			Leq	L10	L90	Leq	Leq	Leq
Unit: dB(A), (30min)								
2/12/2019	13:00	Fine	65.6	69.3	60.0	68	66	75
9/12/2019	08:25	Fine	65.9	70.7	59.7	68	66	75
16/12/2019	13:03	Cloudy	67.7	69.8	64.9	68	68	75
27/12/2019	14:37	Fine	67.4	68.5	65.0	68	67	75

Location: M6 - HK Baptist Church Henrietta Secondary School

Date	Time	Weather	Measurement Noise Level			Baseline Level	Construction Noise Level	Limit Level
			Leq	L10	L90	Leq	Leq	Leq
Unit: dB(A), (30-min)								
2/12/2019	13:46	Fine	70.4	73.1	63.7	71	70	70
9/12/2019	09:03	Fine	64.2	68.6	59.4	71	64	65
19/12/2019	10:50	Cloudy	67.9	69.1	66.3	71	68	65
27/12/2019	15:13	Fine	68.3	69.5	66.5	71	68	70



Noise Monitoring Result

Day Time (0700 - 1900hrs on normal weekdays)

Location: M7e - International Finance Centre (Eastern End of Podium) (Reference Station)

Date	Time	Weather	Measurement Noise Level			Baseline Level	Construction Noise Level	Limit Level
			Leq	L10	L90	Leq	Leq	Leq
Unit: dB(A), (30-min)								
2/12/2019	08:19	Fine	66.1	69.2	60.7	67	66	N/A
10/12/2019	10:21	Fine	64.8	69.0	59.8	67	65	N/A
19/12/2019	14:36	Cloudy	65.5	67.2	62.9	67	66	N/A
24/12/2019	13:51	Fine	67.5	68.6	62.8	67	59	N/A

Location: M7w - International Finance Centre (Western End of Podium)

Date	Time	Weather	Measurement Noise Level			Baseline Level	Construction Noise Level	Limit Level
			Leq	L10	L90	Leq	Leq	Leq
Unit: dB(A), (30-min)								
2/12/2019	09:03	Fine	68.2	71.5	63.6	69	68	75
10/12/2019	10:59	Fine	67.3	70.9	62.0	69	67	75
19/12/2019	13:55	Cloudy	66.9	68.4	64.7	69	67	75
24/12/2019	13:17	Fine	67.3	69.0	64.5	69	67	75

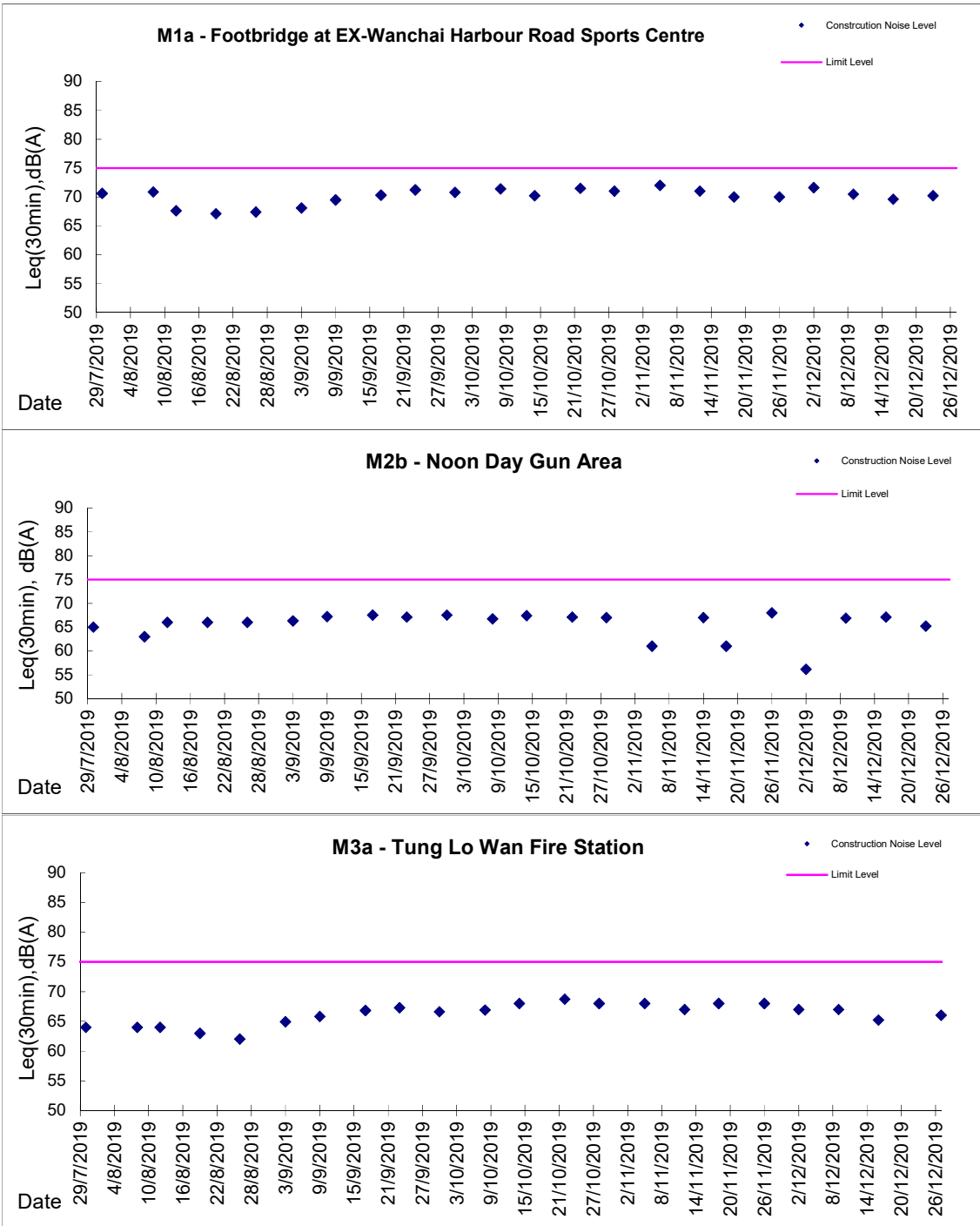
Location: M8 - City Hall

Date	Time	Weather	Measurement Noise Level			Baseline Level	Construction Noise Level	Limit Level
			Leq	L10	L90	Leq	Leq	Leq
Unit: dB(A), (30-min)								
2/12/2019	09:43	Fine	62.4	64.7	57.3	64	62	70
10/12/2019	9:36	Fine	63.3	65.9	57.7	64	63	70
18/12/2019	13:52	Fine	62.6	64.2	58.7	64	63	70
24/12/2019	11:15	Fine	61.2	63.3	58.4	64	61	70



Graphic Presentation of Noise Monitoring Result

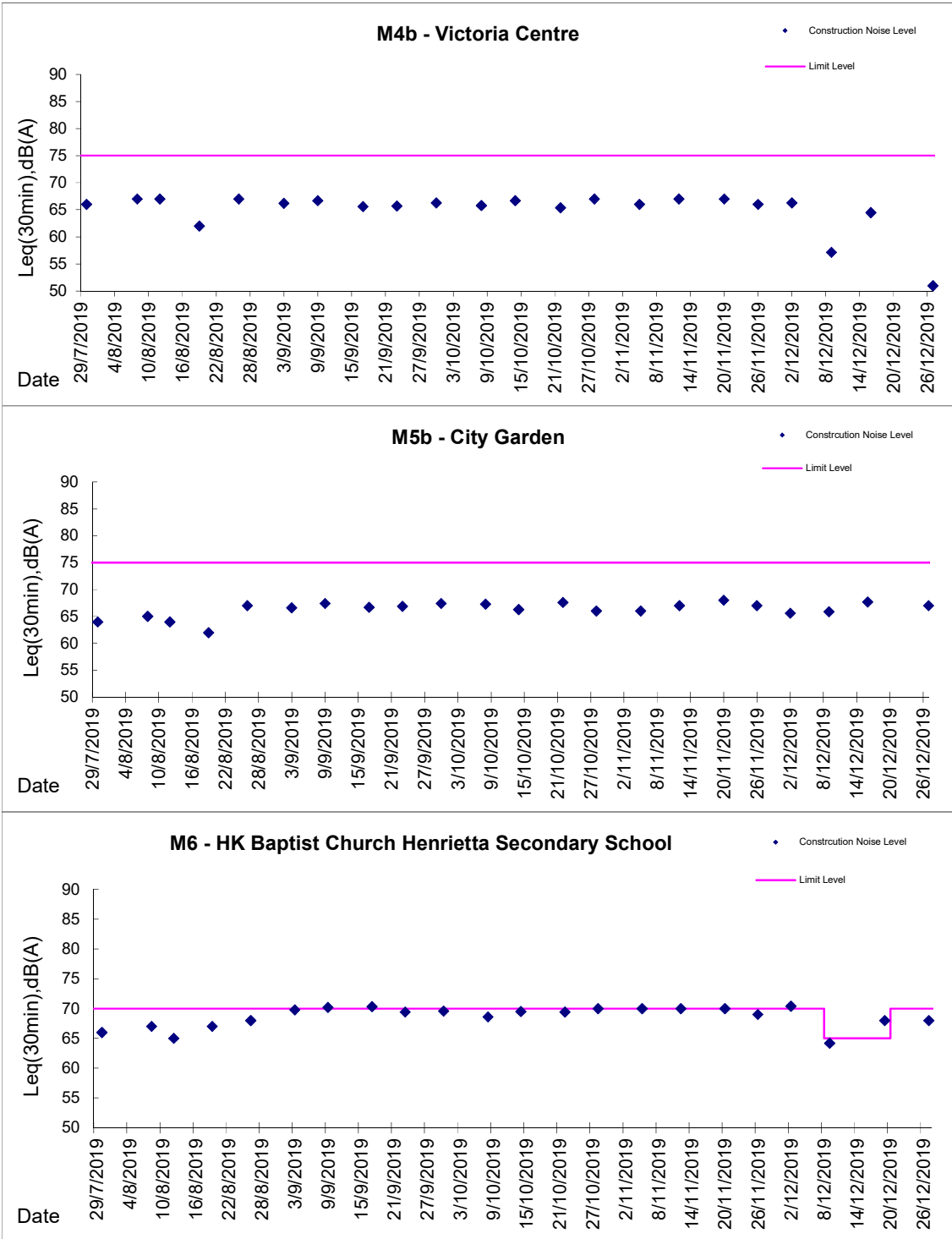
Day Time (0700 - 1900hrs on normal weekdays)





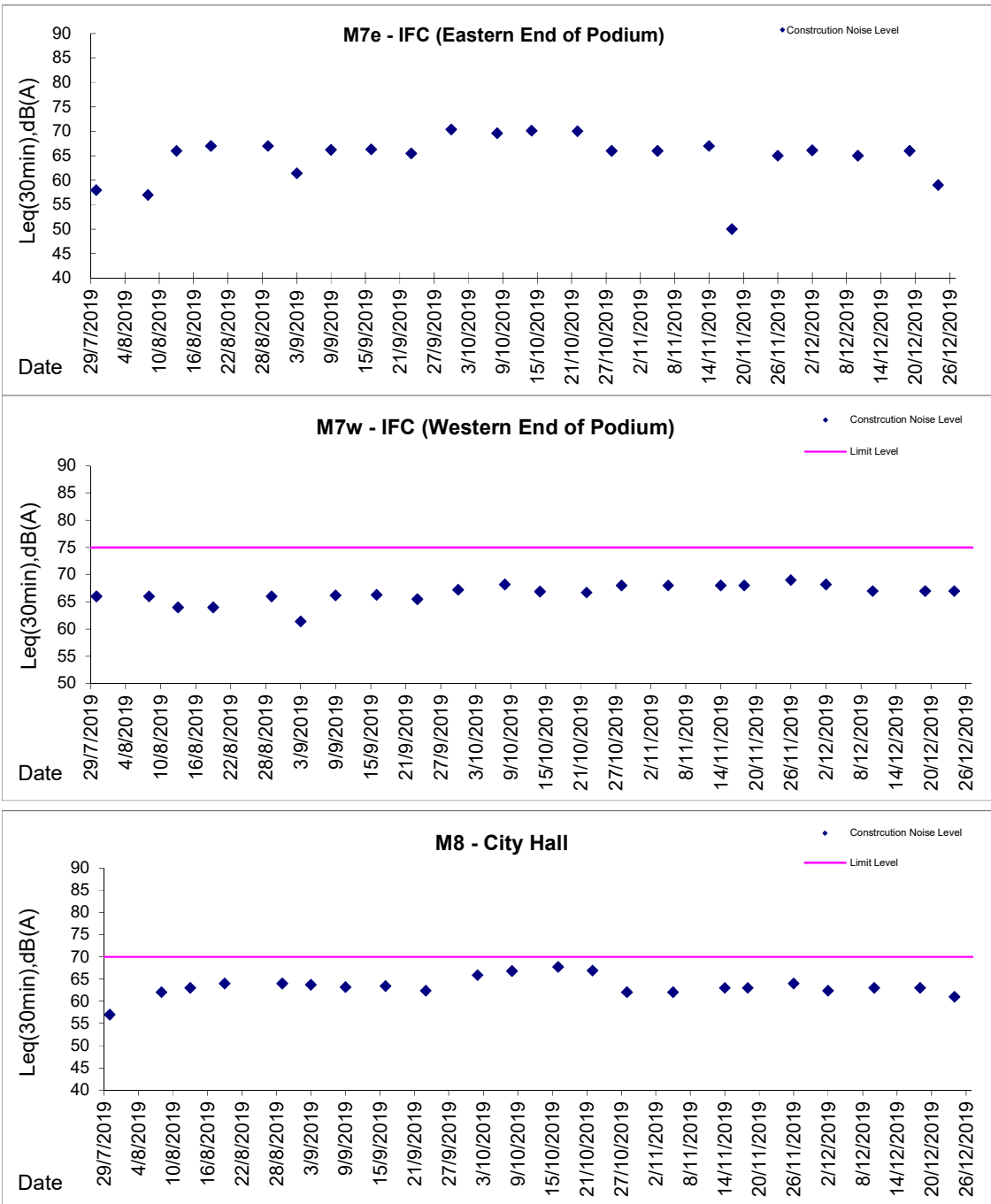
Graphic Presentation of Noise Monitoring Result

Day Time (0700 - 1900hrs on normal weekdays)



Graphic Presentation of Noise Monitoring Result

Day Time (0700 - 1900hrs on normal weekdays)



* Remark: M7e - IFC (Eastern End of Podium) is a reference monitoring station